

NEW PLYMOUTH



Location/environment, friendly, laid back atmosphere, friendly people and community.



Social issues, drugs, mental health services, family violence, Infrastructure.



Churches, NGOs and community trusts, police, public services.



Proud of New Plymouth, mostly positive views of their community.



Don't forget smaller, rural and provincial parts of New Zealand. Address social issues.



Values and morals, connection, leadership and local council.



More community connection, better infrastructure and environment, address social issues, more for youth.

HORNBY



Sense of home, location.



Social issues, not enough for youth and children, infrastructure, rapid growth.



Churches, NGOs and community groups, public services, individuals e.g. Tae Kwon Do guy.



Believe their reputation has changed and improved, particularly since the earthquakes.



Positive views, need better infrastructure and growth, more for youth and children.



Connection, values, leadership, infrastructure.



Change/address social issues.

TĪMARU



Location, community vibe.



Drugs, diversity, other social issues.



Churches, NGOs and community groups, public services.



Balanced view of Tīmaru, Views have changed since earthquakes.



Need economic growth, more jobs, more for youth and children.



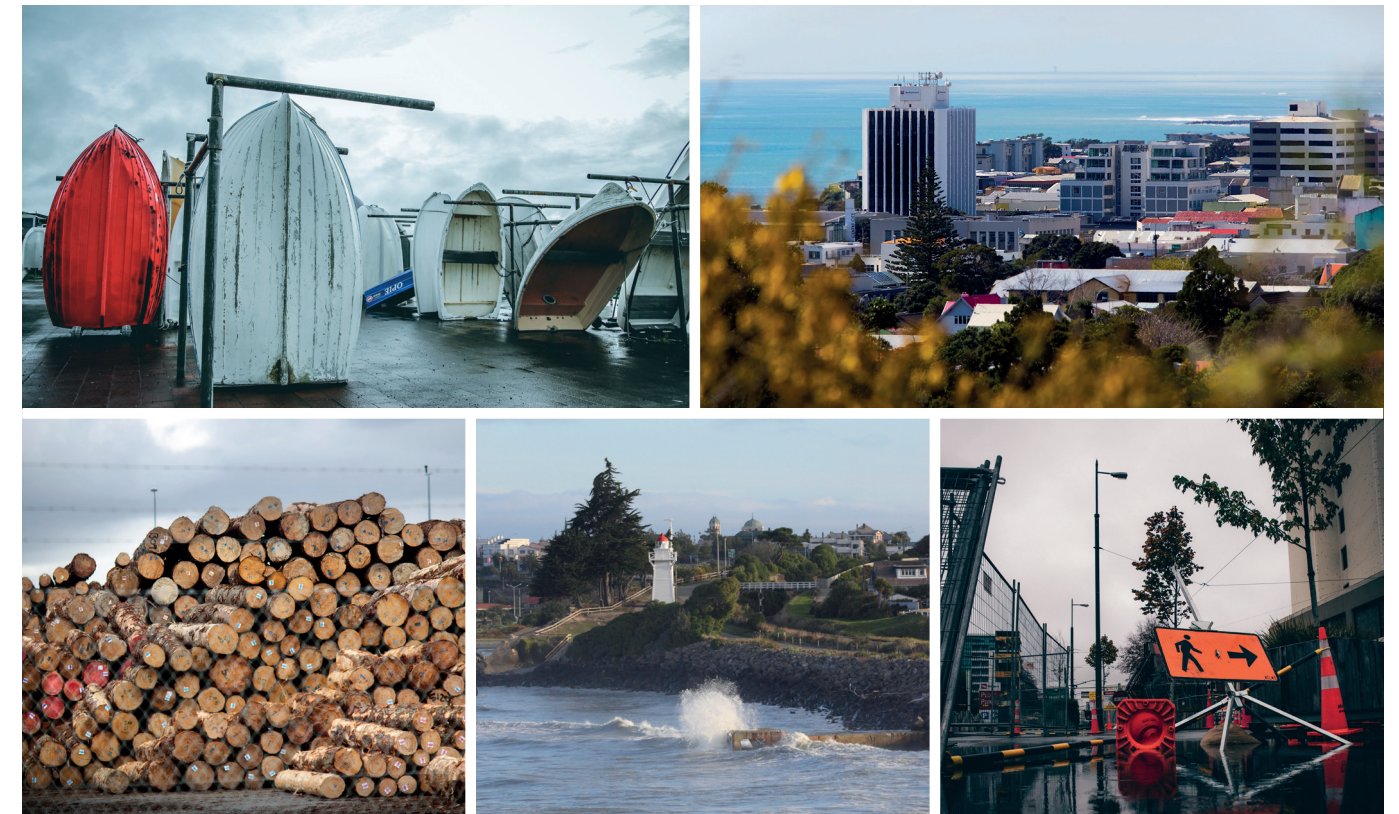
Diversity, leadership and council, community connections, values, jobs.



Economic growth, more for youth, more diversity, stop/reduce drugs and gangs.

COMMUNITY LIKES
 COMMUNITY DISLIKES
 WHO'S WORKING TO ADDRESS ISSUES?
 COMMUNITY PUBLIC PERCEPTION

WE WOULD LIKE TO SAY TO THE PM ...
 THE BUILDING BLOCKS OF A STRONG COMMUNITY
 HOPE FOR 5 YEARS FROM NOW ...



Kaitiāia | Whangārei | Manurewa | New Plymouth | Hornby | Tīmaru

Ronji Tanielu | Social Policy Analyst
The Salvation Army Social Policy & Parliamentary Unit
December 2018

We welcome your feedback
PO Box 76249, Manukau, Auckland 2241
(09) 262 2332 | social.policy@salvationarmy.org.nz
twitter.com/SPPU | facebook.com/SPPUNZ



Social Policy & Parliamentary Unit
Working for the eradication of poverty in New Zealand
www.salvationarmy.org.nz/socialpolicy

THE NEW ZEALAND STORY?



WHAT DO YOU LIKE ABOUT THIS COMMUNITY?

Community Vibe, Environment, Sense of Home and Community, Smallness, Location, Diversity and Multicultural Communities, Friendly People



WHAT ARE YOUR CONCERNS OR FEARS FOR THIS COMMUNITY?

Drugs (Meth), Poverty and Inequality, Lack of Health Services, Gangs, Disengaged Youth, Housing and Homelessness, Other Social Issues (e.g. Gambling, Pokies, Alcohol Abuse, Domestic Violence), Ethnicity and Race Issues, Infrastructure, Growth



WHAT ORGANISATIONS OR GROUPS DO YOU KNOW ARE WORKING TO ADDRESS THE CONCERNS YOU JUST RAISED?

- Churches, Christian NGOs, Church Stores
- Māori Community Groups and NGOs
- Public Services
- Ethnic-specific groups
- Individuals



HOW DO YOU THINK THE REST OF THE CITY OR COUNTRY VIEWS YOUR COMMUNITY?

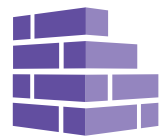
- Mostly Negative (influenced by Media and Social Challenges)
- Some Positive (based on community pride and community strengths like environment, small size, location)



IF THE PRIME MINISTER WAS HERE NOW, WHAT WOULD YOU SAY TO HER ABOUT YOUR COMMUNITY?

Speaking to the Prime Minister:

- Revitalise Local Economies
- Better Housing (first-home buyers and homeless)
- Better for Māori
- Address Social Issues (drugs, mental health and suicide, gangs, addictions, elder abuse, etc.)
- Don't Forget Rural/Smaller/Provincial Communities
- Infrastructure
- Focus on Youth and Children



WHAT DO YOU NEED TO BUILD A STRONG COMMUNITY?

- Leadership
- Community connections (e.g. events)
- Volunteerism
- Diversity
- Communication
- Jobs
- Parents & Whānau
- Values, Ethics, Morals
- Change Negative Perceptions
- Good Infrastructure
- Local Leadership (Council & Individuals)



IN 5 YEARS' TIME, WHAT 2-3 THINGS WOULD YOU LIKE TO SEE HAPPEN/HAPPENING IN YOUR COMMUNITY?

- Change in the Future (Infrastructure, Social Issues)
- Stop/Reduce Drugs, Crime, Gangs
- Better Housing Options
- Stronger Values and Morals
- More Community Connections
- Better for Youth
- More Diversity in Communities
- Economic Growth and Jobs for Locals
- Care for Environment

KAITĀIA



Community vibe, environment.



Meth, drugs, gangs, poverty and inequality, health services (especially mental health).



Churches, Māori & Iwi groups/NGOs.



Very negative and bad reputation, shaped by drugs, P, gangs etc. Negative image shaped by media.



Need better infrastructure, more economic growth, better housing for homeless, renters etc.



Public meeting spaces, good parenting and whanau, community connections, leadership, focus on youth and elderly.



Changes to Kaitiāia (infrastructure), focus on youth (suicide/mental health), reduce meth/P, drugs and crime.

WHANGĀREI



Smallness, sense of home.



Drugs/gangs/P, youth related issues, housing and homelessness.



Churches, NGOs and community groups, public services, Māori organisations.



Seen as drug capital, some had positive views, often compared or relevant to Auckland.



Raise issues around Māori and social issues in Whangārei.



Communication/talking, leadership, willingness to participate, values, ethics and morals, good jobs, good infrastructure.



Better housing options, better public infrastructure, change/reduction in violence, drugs, crime etc.

MANUREWA



Sense of home, people, multicultural and diverse.



Social issues (gangs, drugs, pokies), youth issues (gangs, drugs, disrespect), ethnicity and race issues.



Churches, Marae, NGOs and community groups, public services, ethnic-specific associations (Temple, Assyrian Association).



Negative view from others, grounded in reality, but made worse by media.



Pride about Manurewa, raise social issues.



Connection/events, change the perception of Manurewa, values, volunteerism, deal with social issues.



Better shops, public facilities and infrastructure, better housing for homeless, return to good values.



COMMUNITY LIKES



COMMUNITY DISLIKES



WHO'S WORKING TO ADDRESS ISSUES?



COMMUNITY PUBLIC PERCEPTION



WE WOULD LIKE TO SAY TO THE PM ...



THE BUILDING BLOCKS OF A STRONG COMMUNITY



HOPE FOR 5 YEARS FROM NOW ...